

15–19 JANUARY

LONGERENONG COLLEGE | HORSHAM | WESTERN VIC

SUMMER BRUSHES 2024

GrampianArts

Monday – Friday 9am – 4pm, Wednesday 9am – 12noon. All workshops are held at Longerenong College
229 Longerenong Road | Longerenong 3401. Your workshop fee includes morning tea and lunch

THE POWER OF ONE: MONOTYPES AND MONOPRINTS

Tutor: J(GAYE) NIEUWENHOF

PLEASE BRING

- Name tag
- Coffee mug
- Plastic to cover your table
- Water bottle – *its summer and we need to keep up our fluids!*

MATERIAL LIST

\$65 materials fee - View the list below to see what is included and what you need to bring.

- 1 A4 acrylic plate – *(included in materials fee)*
- Oil paint – *(included in materials fee)*
- Acrylic paints – Paynes Grey.
- Black and white acrylic paint. *(included in materials fee)*
- Black ink – Indian Ink is permanent – *(included in materials fee)*
- Brushes at least a few for acrylics. Chisel shape and pointed. Synthetic with a bit of spring in the bristle.
- A palette – this can be an old plate or disposable palette.
- Pencils – water colour and graphite
- Watercolour crayons *(included in materials fee)*
- Glue – *(included in materials fee)*
- A few small squeeze bottles or recycled sauce bottles will work as well.
- Brayer or two – Tutor will provide some for use in class as well if you can't bring one.
- Gel Press either commercial or homemade: (Recipe attached next page). Tutor will have some 13cmx18cm (A5 size) plates to use in class. If you wish to purchase a Gel press, go for the 20cm x 25cm one (A4). Speedball make one as does Gelli Arts (either of these two). Also Zart Art now have their own version which is more cost effective.
- Some stencils if you have them (Tutor will have some too) We will also make some of our own stencils. A few manilla folders – Buff colour if you can get them, but coloured OK too.
- A roll of paper towel or some rags (supplied by tutor).
- An A3 and A4 Pad of mixed media paper *(included in materials fee)*
- Bring along any old book papers or decorative papers you may like to use.

IF ANY OF THESE ARE EITHER DIFFICULT TO BRING OR HARD TO OBTAIN, PLEASE LET ME KNOW AS I WILL BRING EXTRA.

A silkscreen for each student will be supplied as part of the materials fee, but if you have one already, bring it along. I will also bring print paste and dyes to be used by the class as part of the materials fee.

Some squeegees. These can be anything that is flat and plastic. E.g. a cake bowl scraper, an old credit card is a great tool or one that has been specifically designed.

PTO >>>

SUMMER BRUSHES is a project of GrampianArts, a not-for-profit organisation that strives to provide opportunities for artists to extend their skills and showcase their work.

CONTACT summer@grampianarts.com.au | www.grampianarts.com.au | 0493 430 312

15–19 JANUARY

LONGERENONG COLLEGE | HORSHAM | WESTERN VIC

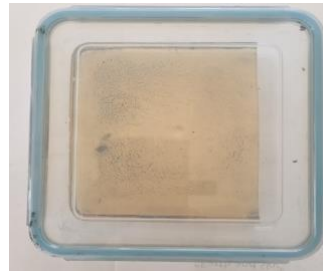
SUMMER BRUSHES 2024

GrampianArts

Monday – Friday 9am – 4pm, Wednesday 9am – 12noon. All workshops are held at Longerenong College
229 Longerenong Road | Longerenong 3401. Your workshop fee includes morning tea and lunch



Lid off



Lid on

MY PERMANENT GELLI PLATE

This recipe is right for a lamington pan or slice pan 30cm x 20cm.

If you need to transport it, leave it in the pan to do so or place in a plastic container to protect it. Also, if it is left in a heated environment it will melt, but left flat on a cool surface it will set again. It takes several hours to set initially and should not be moved during that time as it will disturb the surface. Generally they are better after about a week.

- 8 tablespoons gelatine (one full container of McCormacks Gelatine)
- mixed into 1 cup glycerine and 1 cup rubbing alcohol (Isopropyl is available at Supermarket)
- Add 1 cup boiling water and stir to combine, then add 1 cup cold water and stir. Microwave until clear in a glass bowl (30 secs at a time, do not boil as this will make a huge sticky mess). **It will become very hot, so take care.** Pour into a flat based plastic container and leave uncovered on a flat surface until set. Make sure the plate is at least 1 – 1.5 cm deep. Measure out the liquid into the container before you start to make sure. DO NOT PUT RESIDUE DOWN THE SINK.
- When set, remove by running your finger over the corner of the plate and lift to slide your other hand underneath. Place the plate on the upturned lid of the container, then place the container over the top to protect it.
- If the plate is too flimsy, cut it up with scissors, place into bowl and melt down in microwave, add more gelatine and microwave again in 30 second increments until smooth and clear, re pour into a smaller container and set. This can be done many times over. If paint residue is a problem, pour through a tea strainer sieve to remove.
- Mine is in a lidded plastic container. The containers shown above are from the supermarket and they are 17.5cm square.

SUMMER BRUSHES is a project of GrampianArts, a not-for-profit organisation that strives to provide opportunities for artists to extend their skills and showcase their work.

CONTACT summer@grampianarts.com.au | www.grampianarts.com.au | 0493 430 312